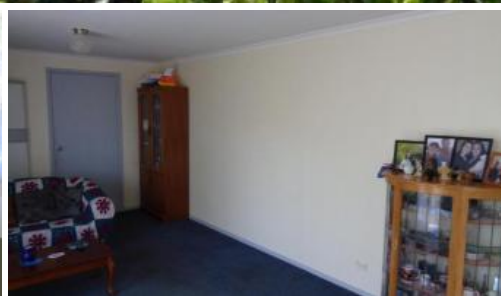
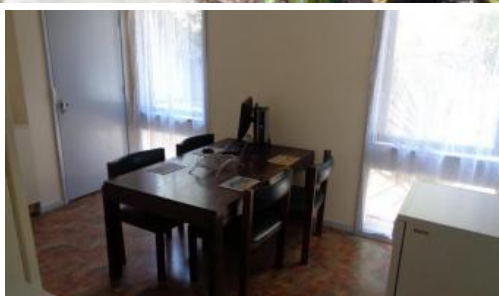


Sold



71 Maple Crescent, Churchill



4 BEDROOMS PLUS

Neat 4 bedroom home plus playroom/craft room etc. Close to shops and Federation University. Large lounge with gas heating + Air Con. Galley kitchen, gas stove and dishwasher + dining area. Built in robes in 3 bedrooms. Fresh bathroom with separate shower and bath. Double garage. Secure yard.

Contact Frank Palermo 0427 049 696

The above information provided has been furnished to us by the vendor/s. We have not verified whether or not that information is accurate and do not have any belief in one way or the other in its accuracy. We do not accept any responsibility to any person for its accuracy and do no more than pass it on. All interested parties should make and rely upon their own inquiries in order to determine whether or not this information is in fact accurate.

🏠 4 🚿 1 🚗 2 📏 616 m2

| | |
|----------------------|-------------|
| Price | SOLD |
| Property Type | Residential |
| Property ID | 995 |
| Land Area | 616 m2 |

Agent Details

Frank Palermo - 0427 049 696

Office Details

First National Central KW
03 5133 7777

