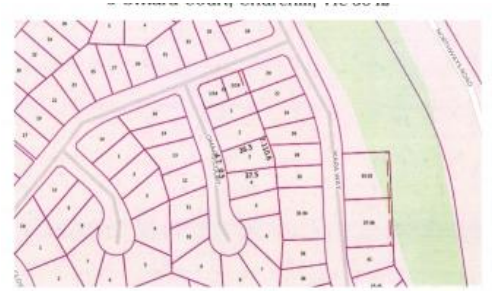




3 Omaru Court, Churchill



## Prime Land Priced To Sell!

Heavily Reduced and titled!  
 749m2 in size, court location  
 Level building site, fenced on 2 sides  
 Elevated block with views  
 All services available & ready to build

The above information provided has been furnished to us by the vendor/s. We have not verified whether or not that information is accurate and do not have any belief in one way or the other in its accuracy. We do not accept any responsibility to any person for its accuracy and do no more than pass it on. All interested parties should make and rely upon their own inquiries in order to determine whether or not this information is in fact accurate.

749 m2

**Price** \$180,000  
**Property Type** Residential  
**Property ID** 2657  
**Land Area** 749 m2

### Agent Details

Frank Palermo - 0427 049 696

### Office Details

First National Central KW  
 03 5133 7777

