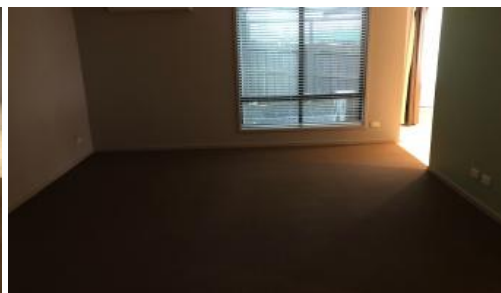


Sold



2 Lemana Place, Churchill



## “NEAR NEW HOME, CLOSE TO UNIVERSITY”

- Lovely modern home in quiet court situation
- Easy walk to shopping centre & University, convenience store around the corner
- 3 bedrooms and study or 4th bedroom
- Ensuite and walk in robe to master, built in robes to bedroom 2 & 3
- Large lounge room with reverse cycle split system
- Open plan kitchen, dining and family room
- Kitchen has good bench and storage space, Pantry and dishwasher
- Family room opens to alfresco and a huge decked area.
- Gas central heating, internal access to home from garage
- Double garage URL and rear access
- Landscaped gardens

 3  2  2  869 m<sup>2</sup>

<b>Price</b>	SOLD
<b>Property Type</b>	Residential
<b>Property ID</b>	1261
<b>Land Area</b>	869 m <sup>2</sup>

### Agent Details

Chris Davis - 0418 594 460

### Office Details

First National Central KW  
03 5133 7777



Contact Chris Davis 0418 594460

The above information provided has been furnished to us by the vendor/s. We have not verified whether or not that information is accurate and do not have any belief in one way or the other in its accuracy. We do not accept any responsibility to any person for its accuracy and do no more than pass it on. All interested parties should make and rely upon their own inquiries in order to determine whether or not this information is in fact accurate.