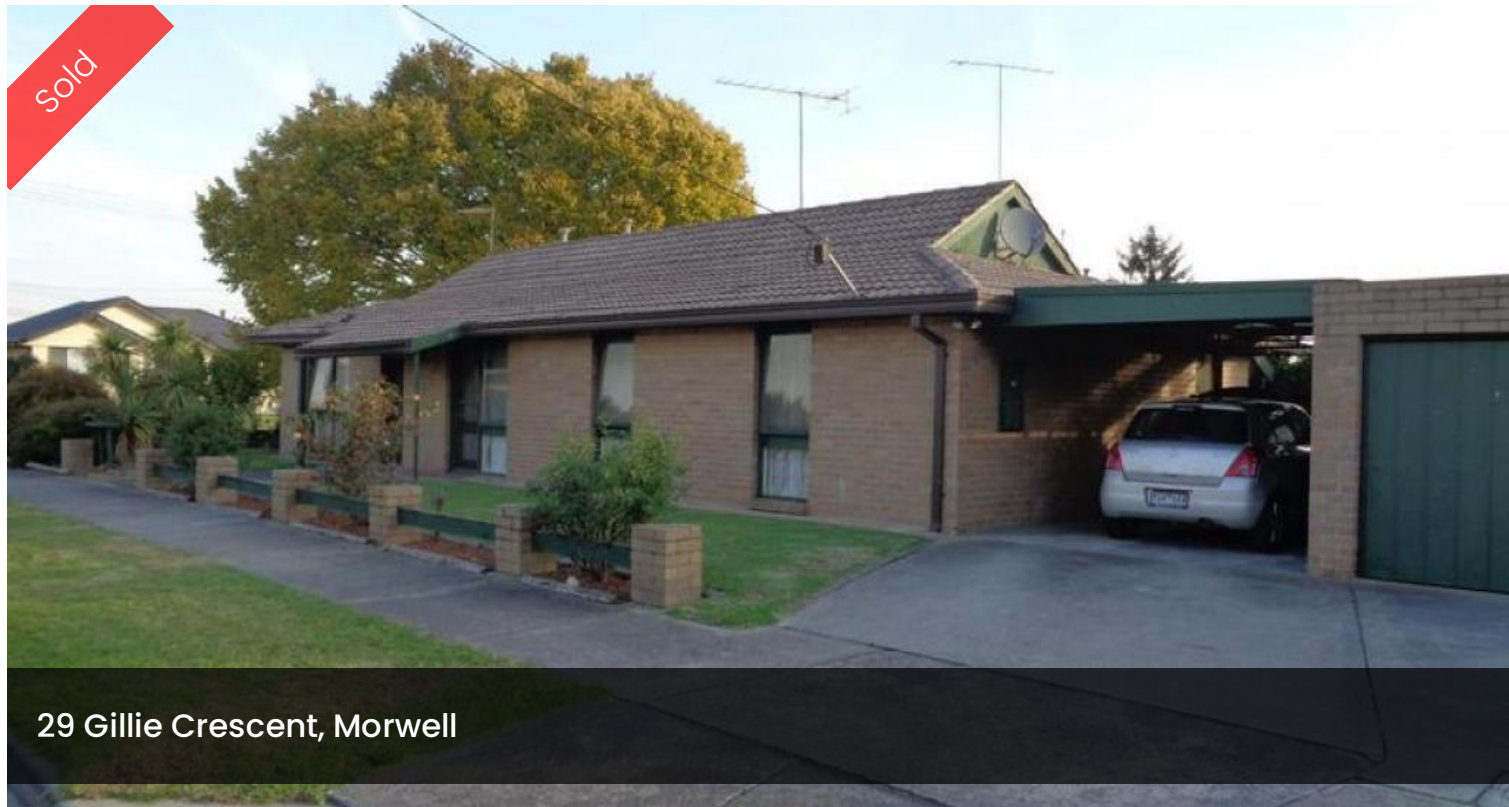
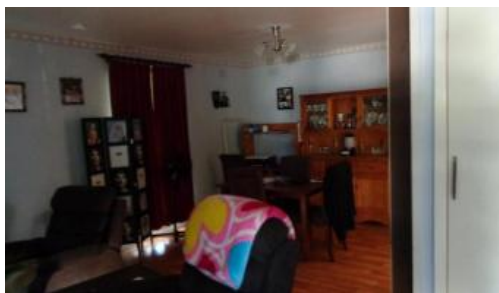
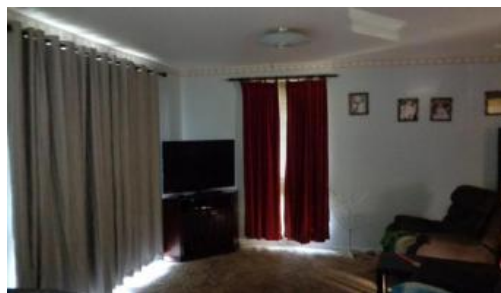


Sold



29 Gillie Crescent, Morwell



FINE HOME - FINE LOCATION

Smart Brick home close to Mid Valley

Formal lounge and dining, separate family room

Modern well equipped kitchen

3 double bedrooms all with BIRs, ensuite to master

Central air con & 2 x gas wall furnaces

Large single garage and carport

Secure yard space and room for caravans and boats

Excellent location, walk to secondary & primary school

Contact Chris Davis 0418 594460

The above information provided has been furnished to us by the vendor/s. We have not verified whether or not that information is accurate and do not have any belief in one way or the other in its accuracy. We do not accept any responsibility to any person for its accuracy and do no more than pass it on. All interested parties should make and rely upon their own inquiries in order to determine whether or not this information is in fact accurate.

3 2 2 598 m2

Price	SOLD
Property Type	Residential
Property ID	1012
Land Area	598 m2

Agent Details

Chris Davis - 0418 594 460

Office Details

First National Central KW
03 5133 7777

